



**SOLUTIONS FOR
CONCRETE TRANSPORT**



The new
standard of the
industry.

Concrete



Concrete pumps



Concrete mixer



Mixer semitrailer



CONTENT

WE INTRODUCE OURSELVES	4
SWAN® CONCRETE PUMPS	6
SWAN® 38-5 160RZ	8
SWAN® 47-5 160RZ	12
SWAN® 57-5 160RZ	16
SWAN® 62-5 160RZ	18
CONCRETE PUMP MIXER.....	20
CONCRETE PUMP ACCESSORIES	22
TRUCK MIXERS	24
TRUCK MIXER ACCESSORIES	26
CONCRETE MIXING TRAILOR	28

EUROMIX MTP GMBH – GLOBAL SUPPLIER OF COMMERCIAL VEHICLE BODIES



As an owner-managed family business, we have been active in the commercial vehicle market for more than 40 years.

In the meantime, we have built up a very good reputation with our commercial vehicle bodies in the European region and successfully positioned the Euromix MTP brand in the market.

As a medium-sized company, we are able to adapt optimally to changing customer needs and offer you, our customers, maximum added value.

Convince yourself of our extended range of services compared to our competitors. We also look forward to welcoming you as our customers and hope you enjoy reading our brochure.

Denis Omeragic
CEO

A handwritten signature in black ink, appearing to read "Denis Omeragic", with a long, horizontal flourish extending to the right.

EUROMIX MTP – WE INTRODUCE OURSELVES

Our specialty is the development, production and marketing of construction and commercial vehicle bodies. With the name Euromix MTP, we stand for high-quality solutions – from the conception to the finished construction vehicle – be it a truck mixer, dump truck, mixer trailers or concrete pumps.

Worldwide, more than 200 customers from various market segments trust us – because our way of working is convincing.

Thanks to 40 years of experience and expertise in this field, our products are robust, durable and reliable.

The transparent production processes and short delivery routes make our work effective and comprehensible for the customer.

From small productions to large quantities, we can offer you an individual service.

Everything from one source is our principle.

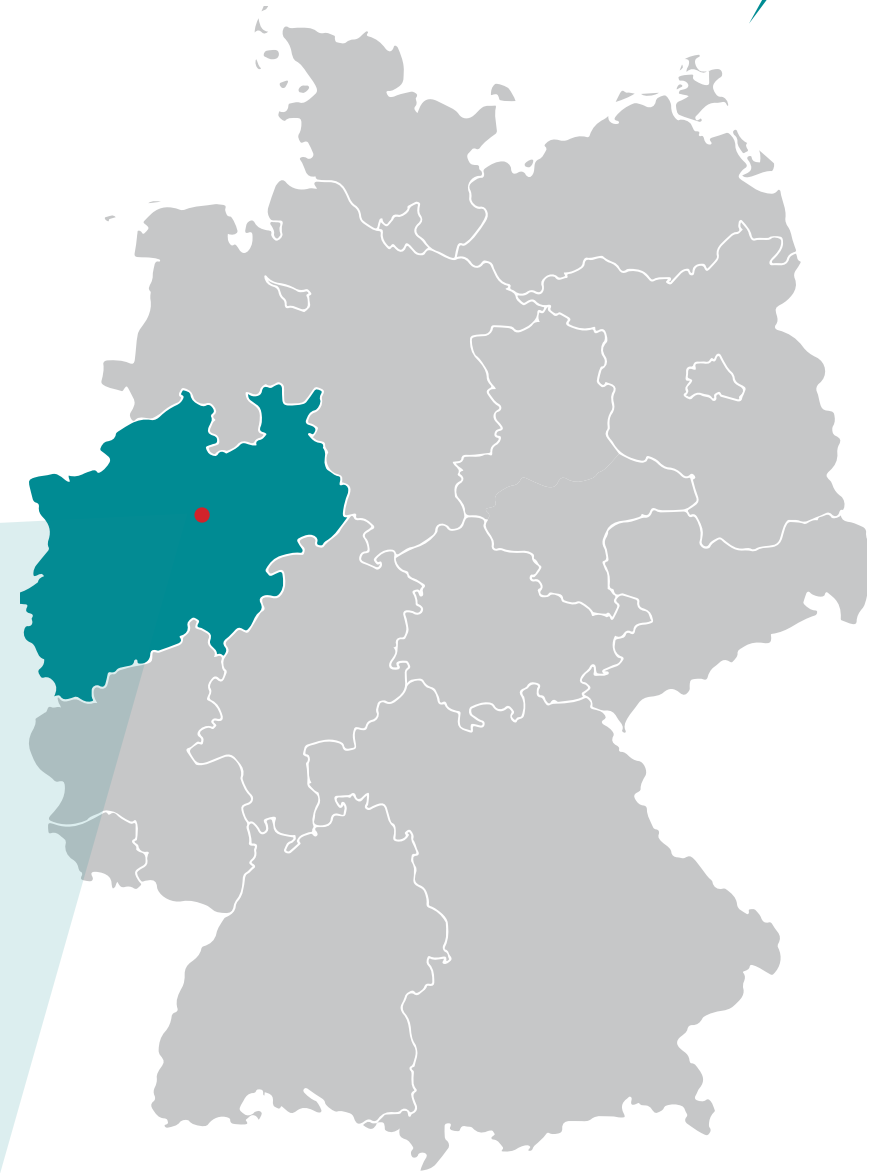
Fast ways and short delivery times as well as cost reduction by very good material competence and waste reduction with best goods quality – this is our biggest priority.

OUR ADDED VALUE FOR YOUR SUCCESS!

THE HIGHEST STANDARDS OF WORKMANSHIP AND DESIGN



- X Euromix to go „Immediately available vehicles from our inventory“.
- X Direct sales - vehicles according to customer requirements
- X Highest flexibility in meeting customer requirements
- X Everything from a single source - commercial vehicles & bodies
- X Service - services for the highest demands
- X Fair prices / financing





SWAN

BY EUROMIX[®]

SWAN[®] CONCRETE PUMPS PERFORMANCE, SAFETY, QUALITY AND WEIGHT OPTIMIZATION!

For years, Euromix MTP GmbH has set itself the goal in the concrete sector to offer a **mobile concrete pump** in line with market requirements to customers worldwide in addition to its successful products, truck mixers and concrete trailers.

Our designers and engineers have worked hard to develop, manufacture and finally bring to market a **high performance concrete pump** for special customer requirements. Today, we are proud to include this product in our program in order to be able to assist you in all aspects of concrete delivery.

With the mobile concrete pumps of the **SWAN[®] series** with their boom lengths of 28 m to 63 m, we offer our customers all standard market sizes.

In addition to **performance, safety and quality aspects**, the greatest attention during the development of the product was paid to the efficient utilization of the permissible total weight. The result is impressive. Our concrete pumps thus set a new benchmark in terms of weight optimization!

Up to
85 bar
max.
Concrete pressure*

Up to
160 m³/hr
max.
Concrete capacity*



HAWE
HYDRAULIK

scanreco
What do you want to remote?

STRENX[®]
PERFORMANCE STEEL

rexroth
A Bosch Company



SWAN® S38-5 160RZ CONCRETE PUMP



SWAN® S38-5 160RZ CONCRETE PUMP



CORE PUMP

MAX. CONCRETE CAPACITY:	160 m³/h
MAX. CONCRETE PRESSURE:	85 bar
STROKE:	30 per min
DELIVERY CYLINDER:	2100 mm x Ø230 mm
MAIN HYDRAULIC CYLINDER:	2100 mm x Ø140 x Ø80 mm
SHIFTING SYSTEM:	S Valve
WATER PUMP:	67 l/min
WATER TANK:	600 l
CONCRETE HOPPER:	600 l
LUBRICATION:	Lincoln Automatic
	lubrication for hopper group
HYDRAULIC PUMPS:	Rexroth 2x A4VG145, Rexroth A10VO28 Rexroth A17FO045, Blue Ascend AP 20.140
CHANGEOVER SYSTEM:	Magnetic sensor (Proximity switch)

EUROMIX MTP GmbH reserves the right to change any specifications.
All data provided herein is for theoretical reference purposes only.

PEDESTAL

TYPE:	X type
FRONT LEGS:	Hydraulic motor
REAR LEGS:	Slewing type hydraulic cylinder driven
DISTANCE – FRONT LEGS:	6,3 m
DISTANCE – REAR LEGS:	8,2 m
SLEWING ANGLE:	365°
DELIVERY LINE:	Ø125 mm (outer diameter Ø132 mm) 5,5" Flanges & couplings

Construction sites are often tight on space, making it difficult to fully extend the truck-mounted concrete pump's outriggers.

With the optional support system, Euromix concrete pumps can be safely stabilized with SSC (Swan Set-up Control).

Integrated sensors accurately detect the outrigger positions and automatically define the permitted working area.

This ensures that the boom does not move into critical zones that could prevent work under unstable conditions. The available workspace varies depending on the machine model.

Beyond the standard outrigger system, additional stabilization configurations provide even greater flexibility on-site.

This allows the truck-mounted concrete pump to be set up quickly and securely, even in confined spaces.

Even the most demanding pumping tasks can be completed with maximum safety.

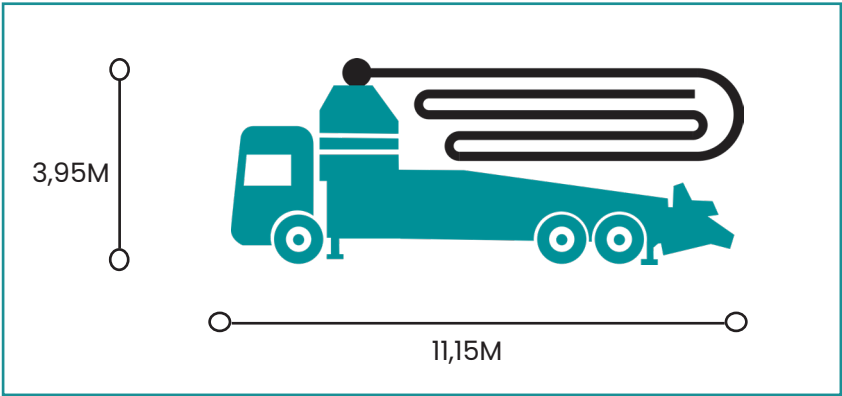
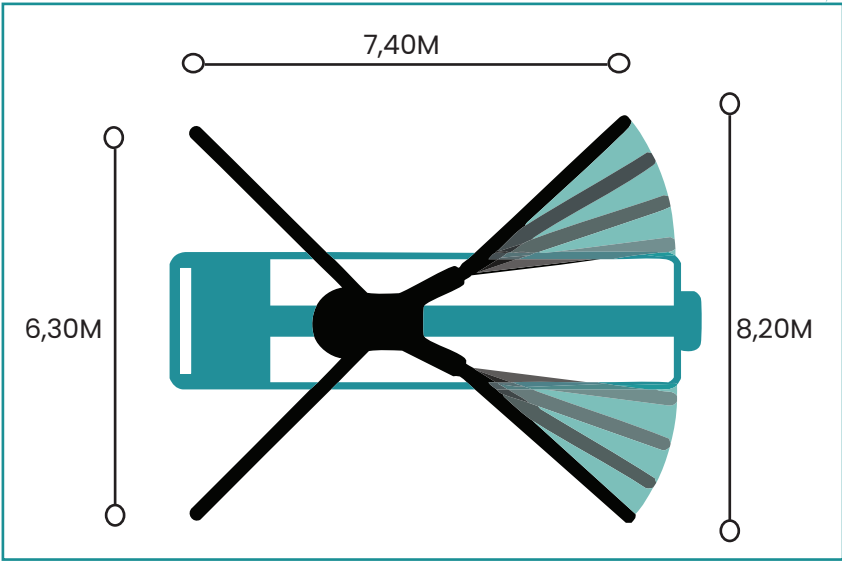
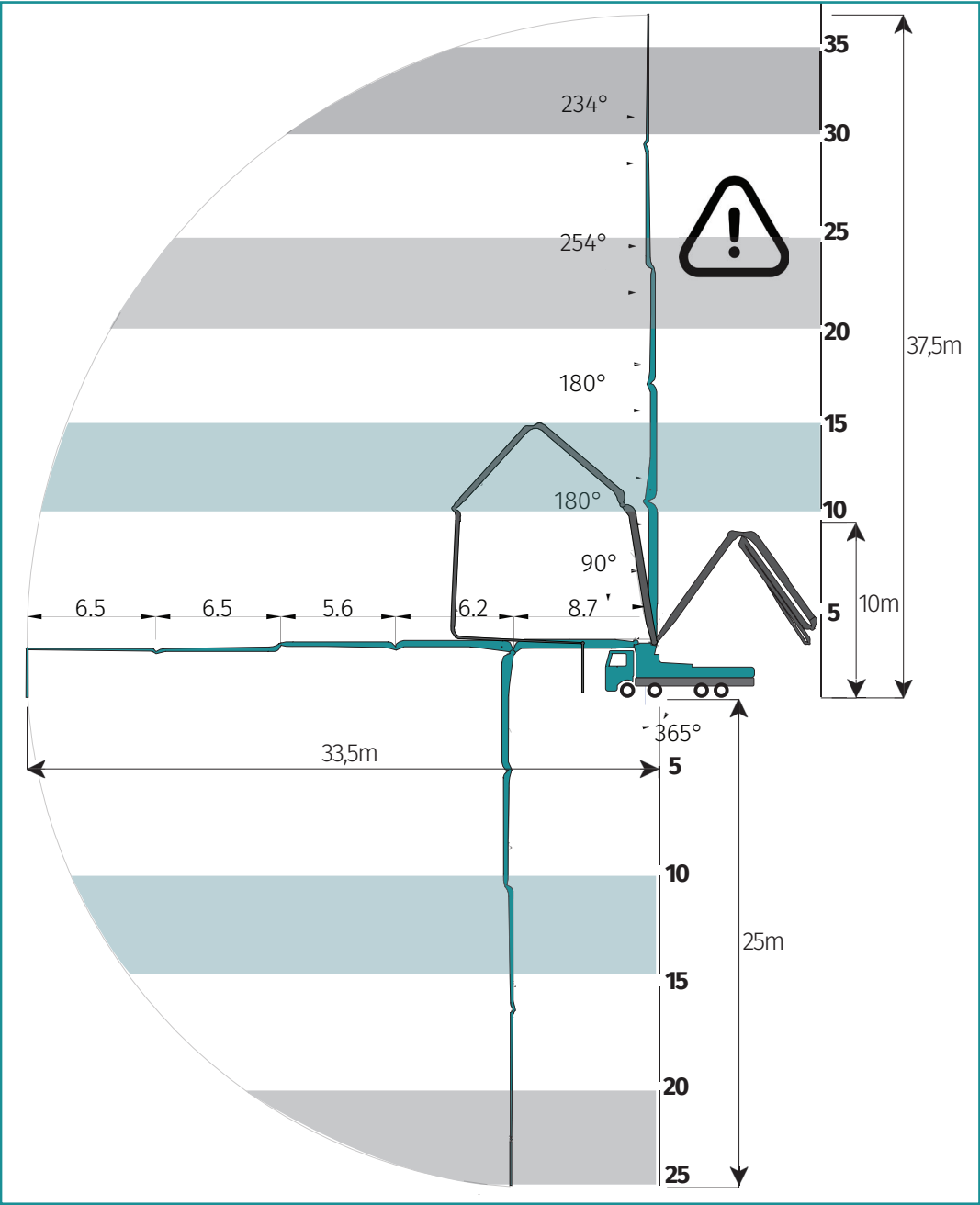
BOOM

FOLDING TYPE:	RZ folding
MAX. VERTICAL REACH:	37,5m (withouth end hose)
MAX. HORIZONTAL REACH:	33,5m (withouth end hose)
END HOSE:	3m-Single flanged DN 125

WEIGHT

CONCRETE PUMP WEIGHT:	17000 kg
-----------------------	-----------------

WORKING RANGE AND OUTRIGGER DETAILS



BOOM DETAILS	
UNFOLDING HEIGHT:	10 m
MAX VERTICAL REACH:	37,5 m (without end hose)
MAX HORIZONTAL REACH:	33,5 m (without end hose)

DIMENSIONS AND ACCESSORIES



ACCESSORIES

HOPPER VIBRATOR:

Allows easy distribution of concrete

OUTRIGGER LIGHTS:

Handy in low light conditions for working area

HOPPER LIGHTS:

Convenient in low light conditions

END HOSE SQUEEZE VALVE:

Allows stopping the flow of concrete

BOOM LIGHT:

Provides illumination for work area

HOPPER COVER AND RUBBER COLLAR:

Prevents concrete disipation

END HOSE 3M:

Precise distribution of concrete

SWAN® S47-5 160RZ CONCRETE PUMP



SWAN® S47-5 160RZ CONCRETE PUMPS



CORE PUMP

MAX. CONCRETE CAPACITY:	160 m³/h
MAX. CONCRETE PRESSURE:	85 bar
STROKE:	30 per min
DELIVERY CYLINDER:	2100 mm x Ø230 mm
MAIN HYDRAULIC CYLINDER:	2100 mm x Ø140 x Ø80 mm
SHIFTING SYSTEM:	S Valve
WATER PUMP:	67 l/min
WATER TANK:	600 lt
CONCRETE HOPPER:	600 lt
LUBRICATION:	Lincoln Automatic
	lubrication for hopper group
HYDRAULIC PUMPS:	Rexroth 2xA4VG145, Rexroth A10VO28 Rexroth A17FO045, Blue Ascend AP 20.140
CHANGEOVER SYSTEM:	Magnetic sensor (Proximity switch)

PEDESTAL

TYPE:	X type
FRONT LEGS:	Hydraulic motor
REAR LEGS:	Slewing type hydraulic cylinder driven
DISTANCE - FRONT LEGS:	8,6 m
DISTANCE - REAR LEGS:	8,7 m
SLEWING ANGLE:	365 °
DELIVERY LINE:	Ø125 mm (outer diameter Ø132 mm) 5,5" Flanges & couplings

BOOM

FOLDING TYPE:	RZ folding
MAX. VERTICAL REACH:	46,8m (withouth end hose)
MAX. HORIZONTAL REACH:	42,8m (withouth end hose)
END HOSE:	3m-Single flanged DN 125

WEIGHT

CONCRETE PUMP WEIGHT:	22 000 kg
-----------------------	------------------

Construction sites are often tight on space, making it difficult to fully extend the truck-mounted concrete pump's outriggers.

With the optional support system, Euromix concrete pumps can be safely stabilized with SSC (Swan Set-up Control).

Integrated sensors accurately detect the outrigger positions and automatically define the permitted working area.

This ensures that the boom does not move into critical zones that could prevent work under unstable conditions. The available workspace varies depending on the machine model.

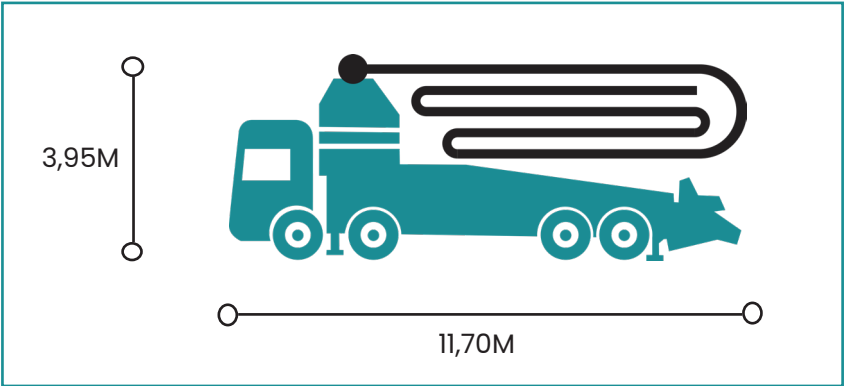
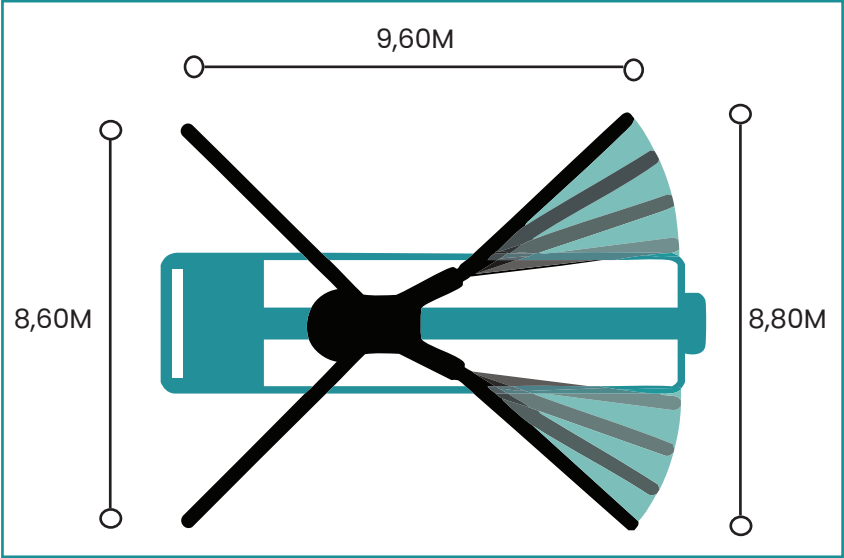
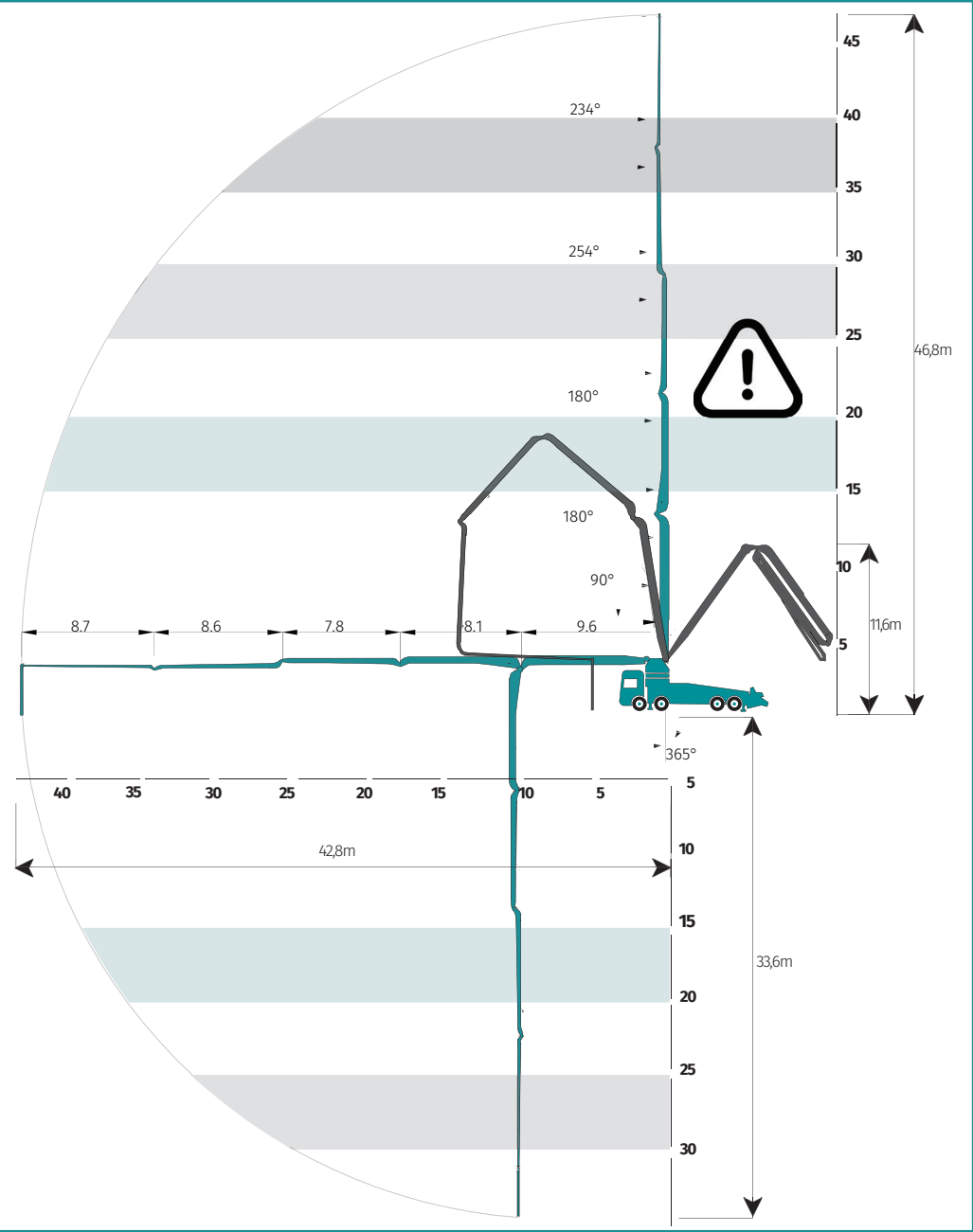
Beyond the standard outrigger system, additional stabilization configurations provide even greater flexibility on-site.

This allows the truck-mounted concrete pump to be set up quickly and securely, even in confined spaces.

Even the most demanding pumping tasks can be completed with maximum safety.

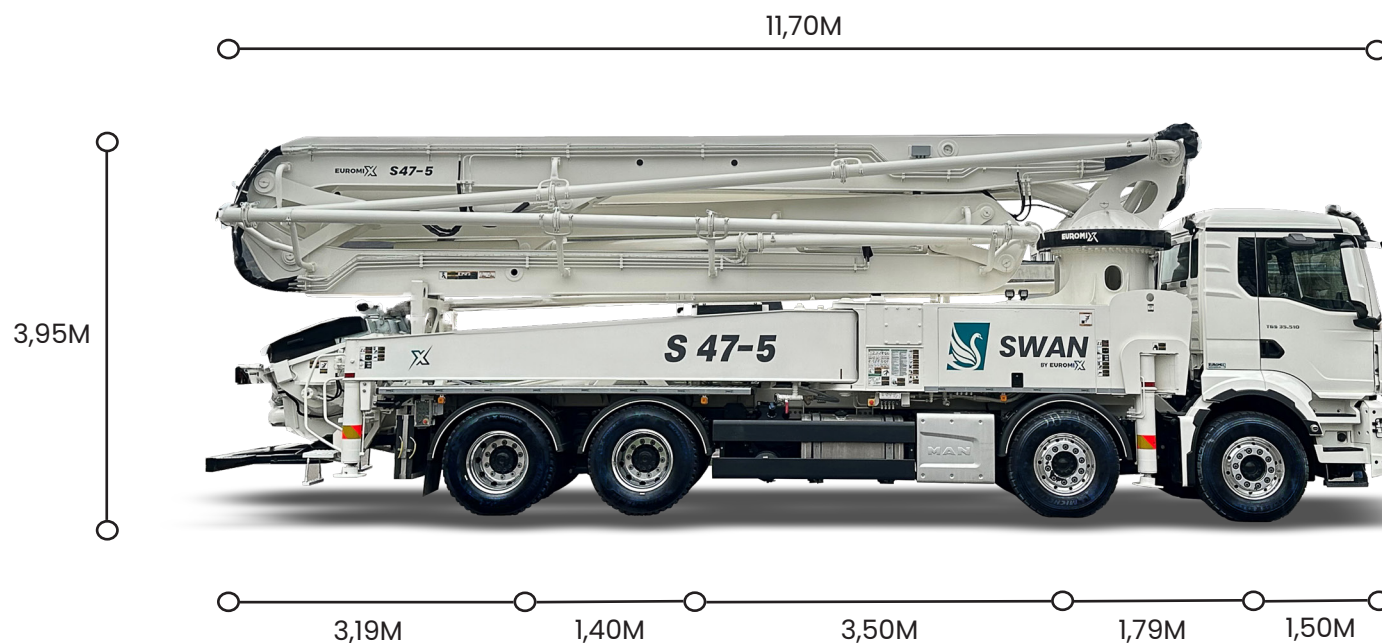
EUROMIX MTP GmbH reserves the right to change any specifications.
All data provided herein is for theoretical reference purposes only.

WORKING RANGE AND OUTRIGGER DETAILS



BOOM DETAILS	
UNFOLDING HEIGHT:	11,6 m
MAX VERTICAL REACH:	46,8 m (without end hose)
MAX HORIZONTAL REACH:	42,8 m (without end hose)

DIMENSIONS AND ACCESSORIES



ACCESSORIES

HOPPER VIBRATOR:

Allows easy distribution of concrete

OUTRIGGER LIGHTS:

Handy in low light conditions for working area

HOPPER LIGHTS:

Convenient in low light conditions

END HOSE SQUEEZE VALVE:

Allows stopping the flow of concrete

BOOM LIGHT

Provides illumination for work area

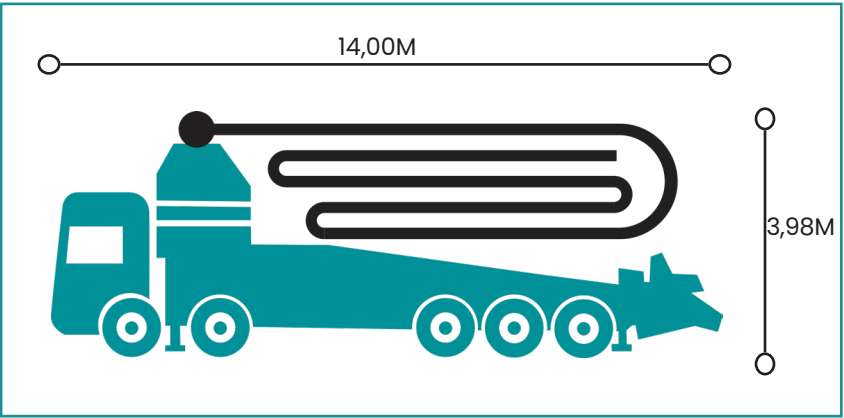
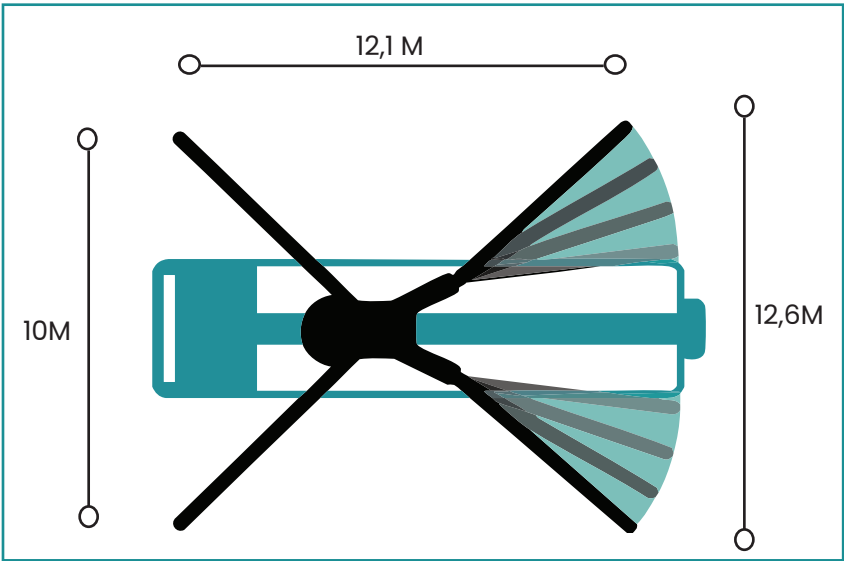
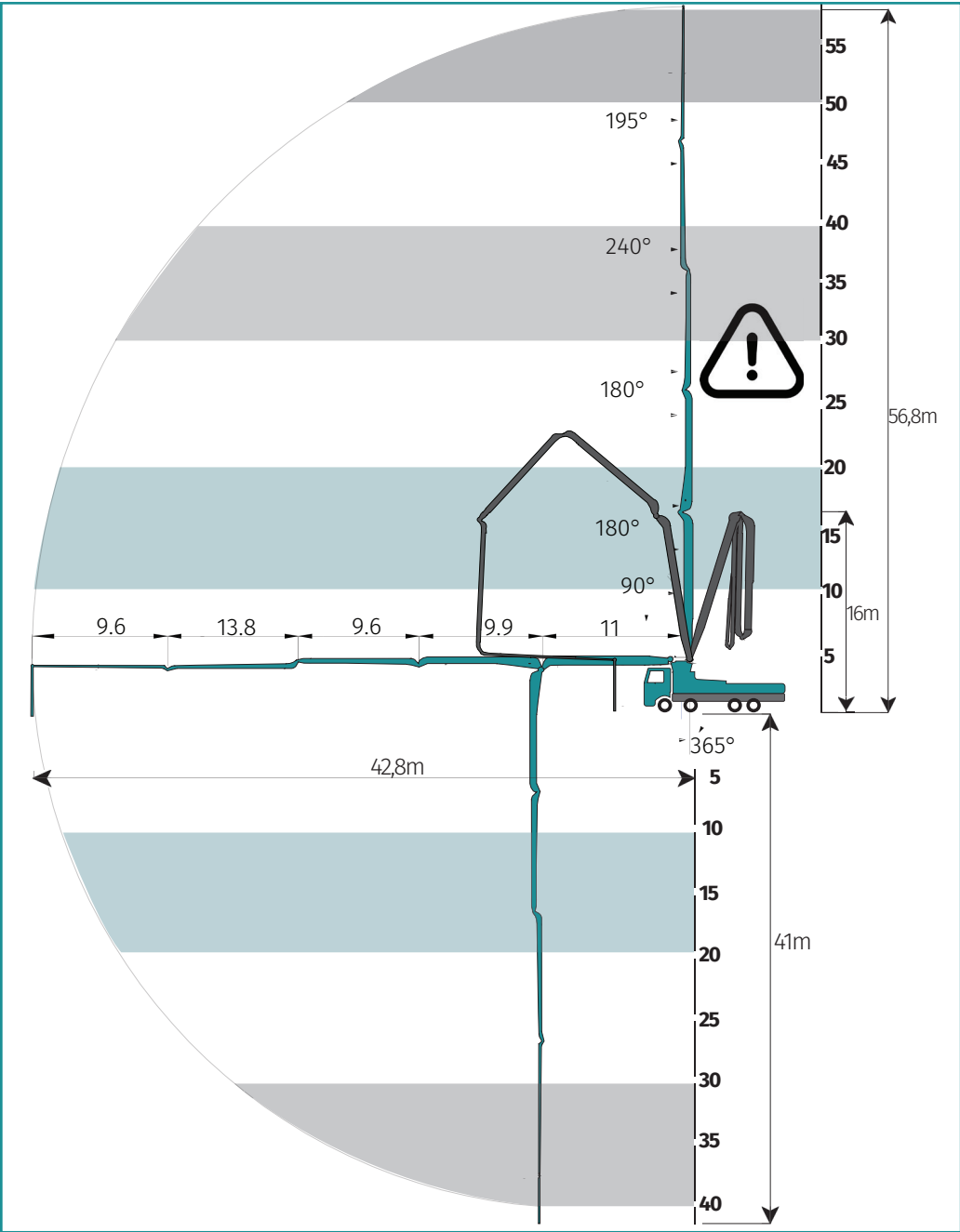
PLASTIC HOPPER COVER AND RUBBER COLLAR:

Prevents concrete disipation

END HOSE 3M:

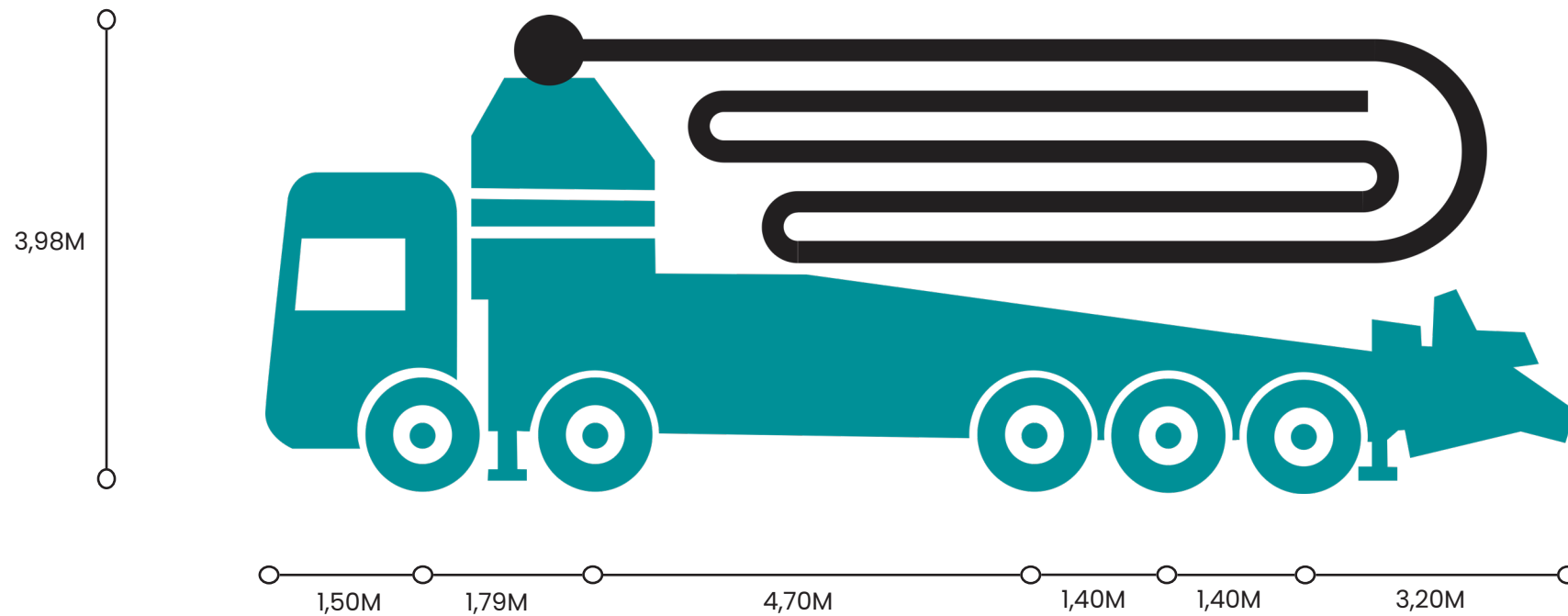
Precise distribution of concrete

CONCRETE PUMP S57-5 160 RZ DIMENSIONS AND OUTRIGGER DETAILS



BOOM DETAILS	
UNFOLDING HEIGHT:	16 m
MAX VERTICAL REACH:	56,8 m (without end hose)
MAX HORIZONTAL REACH:	42,8 m (without end hose)

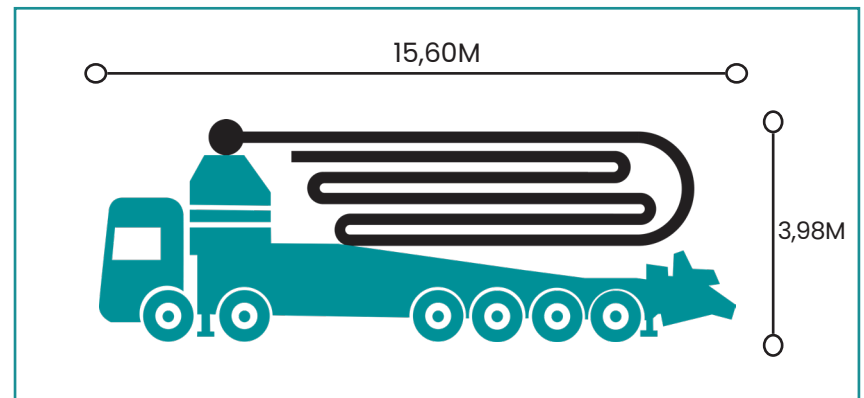
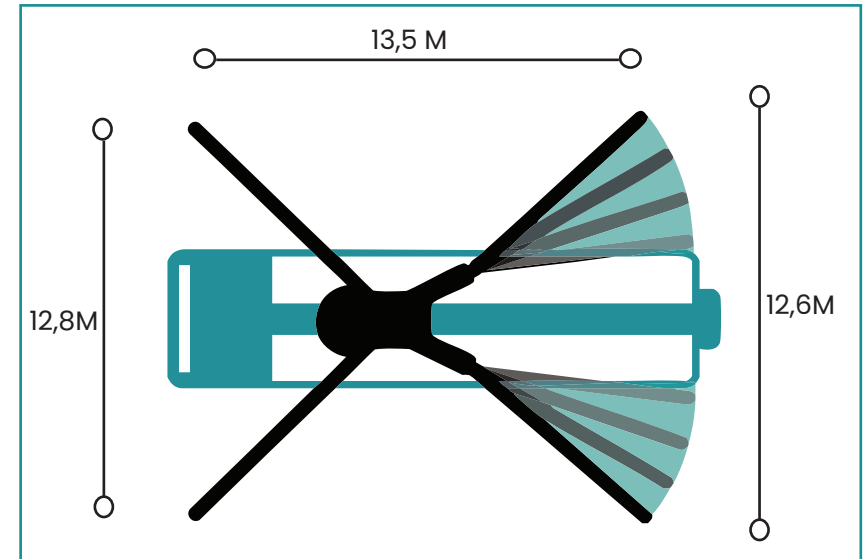
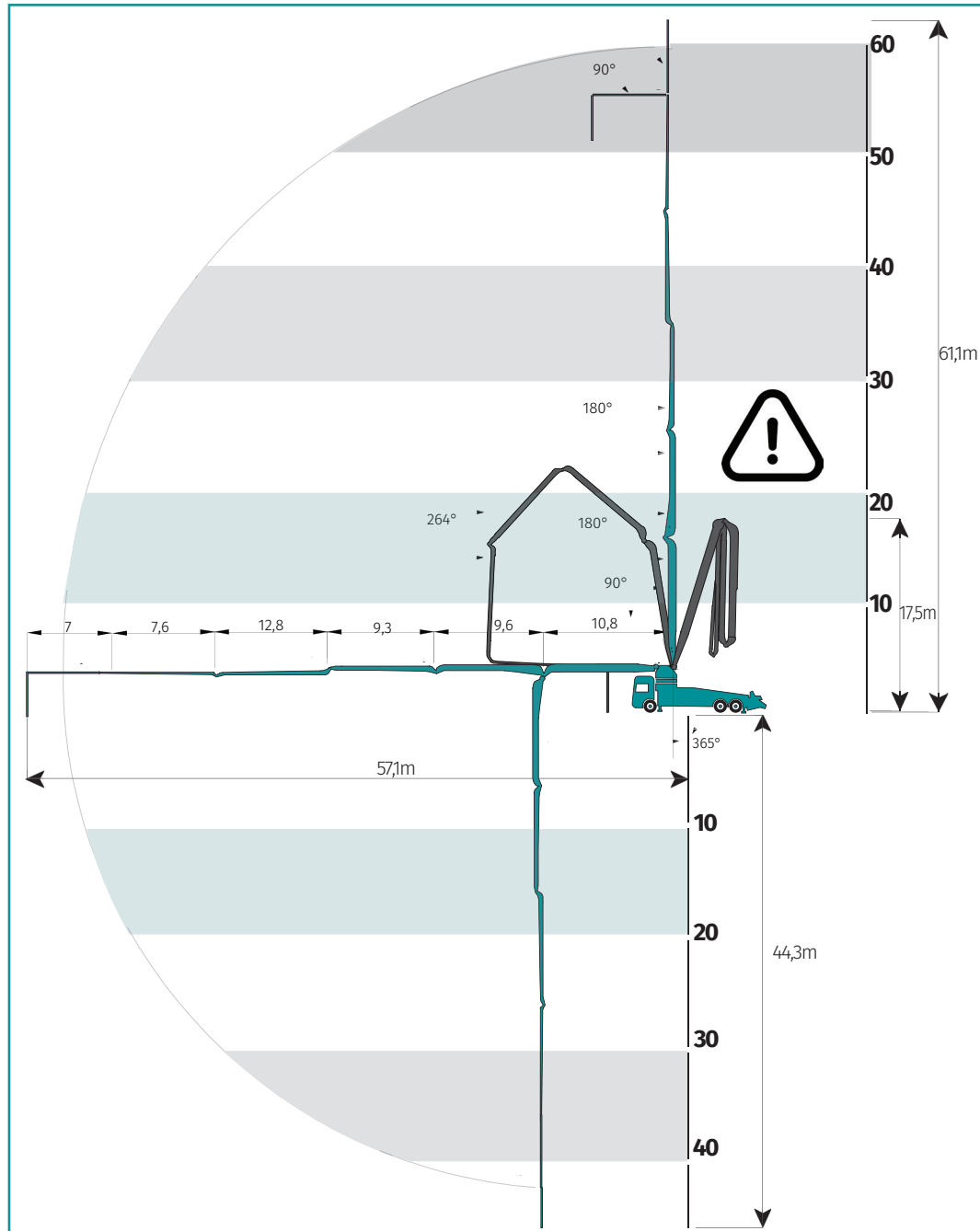
CONCRETE PUMP S57-5 160 RZ DIMENSIONS AND ACCESSORIES



ACCESSORIES

HOPPER VIBRATOR:	Allows easy distribution of concrete
OUTRIGGER LIGHTS:	Handy in low light conditions for working area
HOPPER LIGHTS:	Convenient in low light conditions
END HOSE SQUEEZE VALVE:	Allows stopping the flow of concrete
BOOM LIGHT	Provides illumination for work area
PLASTIC HOPPER COVER AND RUBBER COLLAR:	Prevents concrete disipation
END HOSE 3M:	Precise distribution of concrete

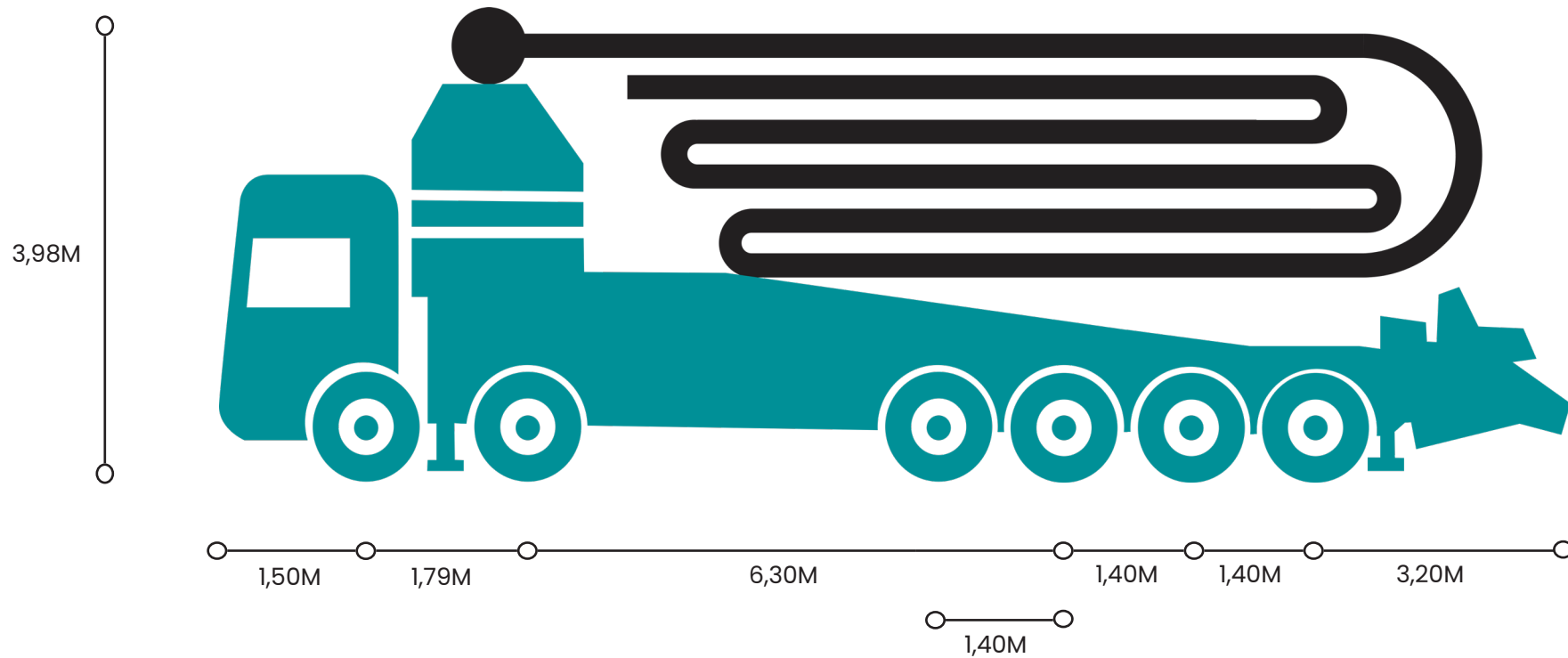
CONCRETE PUMP S62-6 160 RZ DIMENSIONS AND OUTRIGGER DETAILS



BOOM DETAILS

UNFOLDING HEIGHT:	17,5 m
MAX VERTICAL REACH:	61,1 m (with end hose)
MAX HORIZONTAL REACH:	57,1 m

CONCRETE PUMP S62-6 160 RZ DIMENSIONS AND ACCESSORIES



ACCESSORIES

HOPPER VIBRATOR:

Allows easy distribution of concrete

OUTRIGGER LIGHTS:

Handy in low light conditions for working area

HOPPER LIGHTS:

Convenient in low light conditions

END HOSE SQUEEZE VALVE:

Allows stopping the flow of concrete

BOOM LIGHT

Provides illumination for work area

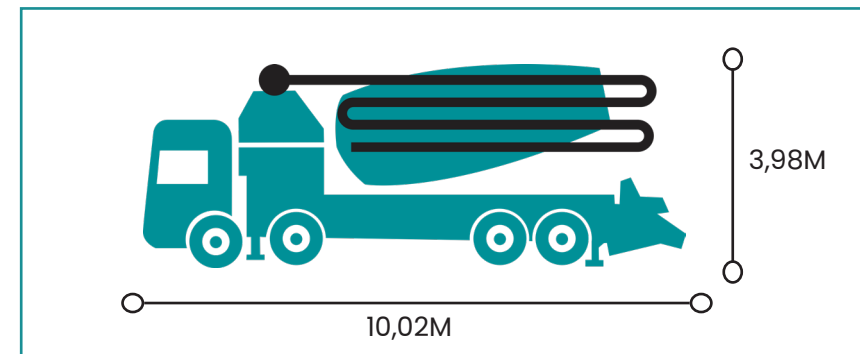
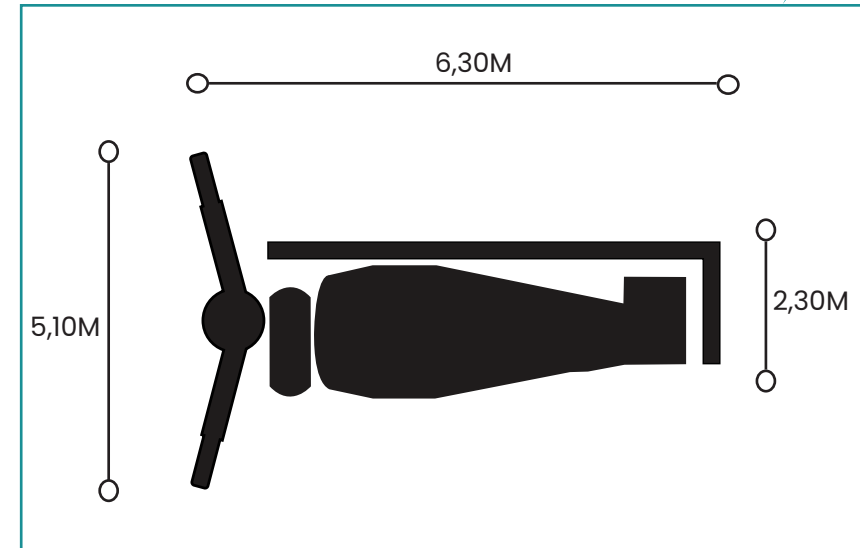
PLASTIC HOPPER COVER AND RUBBER COLLAR:

Prevents concrete disipation

END HOSE 3M:

Precise distribution of concrete

EUROMIX®



NOMINAL CAPACITY:	7 m³
DRUM SPEED:	1-14 r
FILLING RATION:	60%

CONCRETE PUMP MIXER TECHNICAL DETAILS



CORE PUMP	
MAX. BETONKAPAZITÄT:	70 m³/h
MAX. BETONDRUCK:	85 bar
STROKE:	28 pro Minute
SCHLAGANFALL:	1000 mm x Ø230 mm
HAUPHYDRAULIKZYLINDER:	1000 mm x Ø110 x Ø63 mm
SCHALTSYSTEM:	S Ventil
WASSERPUMPE:	67 l/min
WASSERTANK:	500 lt
BETONBEHÄLTER:	450 lt
SCHMIERUNG:	Lincoln Automatic
	Schmierung für die Trichtergruppe
HYDRAULIKPUMPEN:	Rexroth A4VG125EP0
	Rexroth A10V028
	Rexroth A4VTG90EP0
	Rextroth A2FMT090
	Rextroth A17FO023
	Blue Asced AP 20.140
CHANGEOVER SYSTEM:	Magnetsensor

PEDESTAL	
TYP:	V typ
HINTERBEINE:	Behoben
VORDERBEINE:	Antrieb durch Hydraulikmotor und Zylinder
ABSTAND – VORDERBEINE:	5,1 m
ABSTAND – HINTERBEINE:	2,3 m
SLEWING ANGLE:	365 °
LIEFERLEITUNG:	100 mm (Außendurchmesser 107 mm) 4,5" Flansche & Kupplungen

BOOM	
FALTTYP:	Z folding
MAX. VERTIKALE REICHWEITE:	27,4m (withouth end hose)
MAX. HOR. REICHWEITE:	23,4m (withouth end hose)
ENDSCHLAUCH:	3m–Single flanged DN 100

EUROMIX MTP GmbH behält sich das Recht vor, alle Spezifikationen zu ändern.

Alle hierin bereitgestellten Daten dienen ausschließlich

Construction sites are often tight on space, making it difficult to fully extend the truck-mounted concrete pump's outriggers.

With the optional support system, Euromix concrete pumps can be safely stabilized on just one side. Integrated sensors accurately detect the outrigger positions and automatically define the permitted working area.

This ensures that the boom does not move into critical zones that could pose a tipping risk. The available workspace varies depending on the machine model.

Beyond the standard outrigger system, additional stabilization configurations provide even greater flexibility on-site.

This allows the truck-mounted concrete pump to be set up quickly and securely, even in confined spaces.

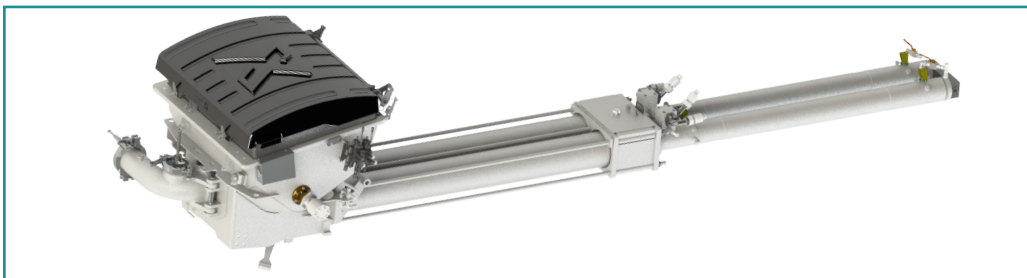
Even the most demanding pumping tasks can be completed with maximum safety.

CONCRETE PUMP ACCESSORIES AND EQUIPMENT



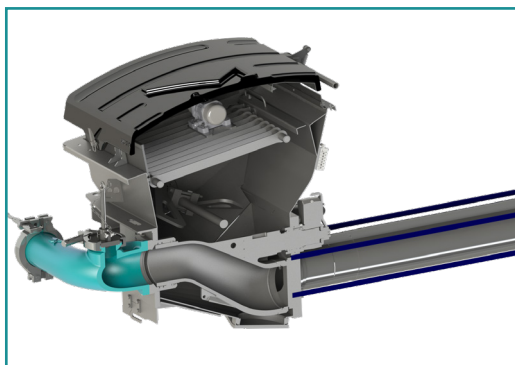
CORE PUMP

Euromix core pump designs provide 85 bar outlet pressure with smooth working and easy maintenance with its simplified structure. Core pump get its power from Bosch Rexroth main hydraulic pump which has the highest quality standards. Core pump design is suitable for different concrete types. Euromix concrete pump can be used long life with high wear resistance delivery cylinders and pistons.



HOPPER

Euromix 600L hopper designed to facilitate concrete flow during pumping. Hopper cover and rubber collar are standard accessories for Euromix concrete pump to keep around clean. Hopper design also provides easy cleaning



WEAR PARTS

With high wear resistance and precision machined Euromix wear parts provides long life. It prevents concrete leakage and suitable for long-term operation in difficult conditions.



S-TUBE

Euromix S-tube design is one of the most common design feature on concrete market with its smooth working, easy to maintenance and durability.

S-tube design provides long working life with Euromix wear parts.



HYD. CONTROL

Euromix open hydraulic system equipped with Bosch Rexroth hydraulic pumps has high efficiency, more power and less energy lost.

With compact design of hydraulic system, smaller spaces are enough and expensive control blocks are not required. Lower maintenance costs and easy service are what make Euromix con-



VIBRATOR

One of the user friendly feature of Euromix concrete pumps is vibrator.

Concrete can flow easily to the spaces with support of powerful vibrator.

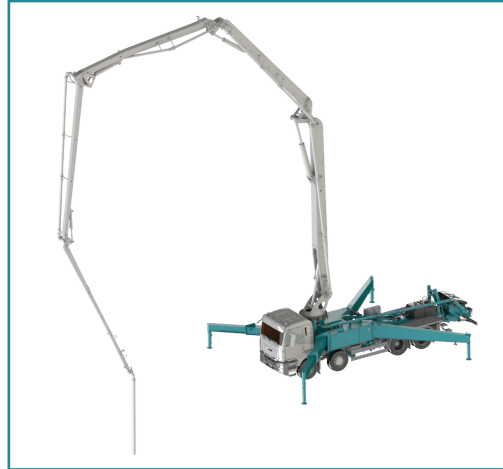


CONCRETE PUMP ACCESSORIES AND EQUIPMENT



BOOM

Construction areas are always different hard conditioned work environments. Euromix RZ booms are user friendly for reach complex areas, provides quick folding and unfolding. All booms produced with STRENX materials which has high durability during entire all work life. Euromix boom designs can turn 365° and that means more flexibility on different



OUTRIGGERS

X type outriggers which are designed by Euromix are also produced by high quality STRENX materials to work safely under high stress conditions. Using higher quality STRENX materials reduces the weight and make Euromix concrete pumps more stable.



END HOSE

End hose squeezing valve is one of the significant feature of Euromix concrete pumps to help operators to stop concrete flow during operation.

Pneumatically operated squeeze valve helps keep the environment clean and provides convenience working conditions for construction workers.



CONTROL SYSTEM

Euromix concrete pumps provides stable, safe and easy operation with electronic control systems.

Swan Pump Control (SPC) is electronic control system for controlling and regulating concrete pumps. Amongst other things, SPC allows pressure and output limit settings to be adjusted to suit the application.

Swan Output Control (SOC) is electronic control system which promotes fuel economy when operating concrete pumps. Engine speed is automatically adjusted to only the minimum required by the delivery rate preselected by the machine operator.

By Swan Graphic Display (SGD) easy to observe the status of the machine and operate. With colorful and understandable menus, operators can get quick overview. Menus have different features of machine, easy to react and control and keep the machine safely running in every job site.

Swan Setup Control (SSC) is significant feature of Euromix to keep machine safe and stable. SSC provides stability in any situation. The reliable and robust control system provides operators with the necessary environment to work safely

Ergonomic design of Euromix remote controls make long hours of work easier. Sensitive control features and safety features make jobs safer..





TRUCK MIXER FROM 7 TO 15 M³

EUROMIX MTP REGULAR (R)

The overall design and construction are characterized by their robustness and durability under the toughest operating conditions. The **stiffened and extremely solid frame construction** is at the heart of this. The center of gravity is extremely low and, in conjunction with **optimized load distribution**, offers increased safety in the various phases of operation. Solid and robust mechanical engineering for your application.



TECHNICAL DATA



Model	EM7R	EM8R	EM9R	EM10R	EM12R	EM15R
Capacity nominal	7 m ³	8 m ³	9 m ³	10 m ³	12 m ³	15 m ³
Geometric volume	12.000 l	14.220 l	16.110 l	17.361 l	19.420 l	24390 l
Water tank volume	7.310 l	8.979 l	10.076 l	11.121 l	15.200 l	15200 l
Tank inclination	13.6°	13.2°	11.6°	11.3°	10.5°	9.3°
Length in mm	6.046	6.383	6.785	7.080	7.545	7.545
Width in mm	2.300	2.300	2.300	2.300	2.300	2.300
Height in mm	2.630	2.695	2.693	2.750	2.765	2.569
Total weight in kg	3.450	3.715	3.820	3.965	4.725	5.395

TRUCK MIXER FROM 7 TO 10 M³

EUROMIX MTP LIGHT (L) & SUPER LIGHT (SL)



Advantages of our lightweight concrete mixers:

- Use of wear-resistant and particularly hard Hardox steel 450/500
- Particularly powerful gearboxes
- Reinforced mixer spiral from 5 to 6 mm Hardox steel 500
- Weight saving from 10% to 15%
- Use of weight-optimized individual components e.g. aluminum staircase
- Lower costs/higher yield per m³ of ready-mix concrete



HARDOX®

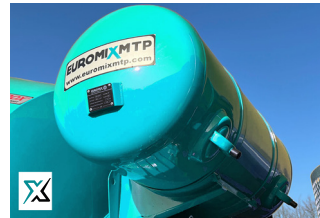
TECHNICAL DATA

Model	EM7L	EM8L	EM9L	EM9SL	EM10L
Capacity nominal	7 m ³	8 m ³	9 m ³	8.7 m ³	10 m ³
Geometric volume	12.000 l	14.220 l	16.110 l	15.120 l	17.361 l
Water tank volume	7.310 l	8.979 l	10.076 l	9.745 l	11.121 l
Tank inclination	13.6°	13.2°	12.3°	12.3°	11.3 °
Length in mm	6.041	6.378	6.785	6.780	7.075
Width in mm	2.300	2.300	2.300	2.300	2.300
Height in mm	2.628	2.691	2.693	2.693	2.748
Total weight in kg	3.120	3.320	3.525	3.425	3.650



Truck mixer STANDARD ACCESSORIES

What comes as standard with our truck mixers is already an extra with many other manufacturers. At the same price, you generate added value for your company.



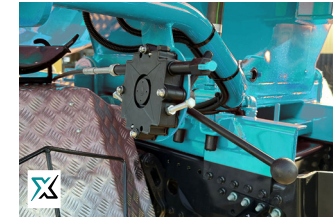
Water tank from 300 L - 1000 L



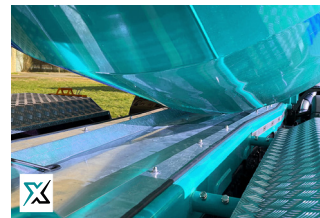
EUROMIX-Start-Stop-Operation Emergency-Stop | RPM-Control



Gearbox, pump & motor from ZF, PMP, Bosch Rexroth



Manual control



Aluminum chassis frame cover



Outer cover of the rear drum bearing block



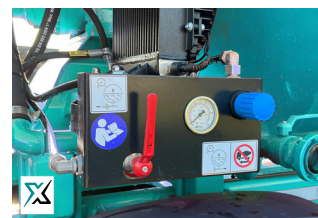
Aluminum fender



Cooling unit



Security door



Pressure gauge pressure display



Truck mixer OPTIONAL ACCESSORIES



Pneumatic/hydraulic
drum lock



LED worklights



Fire extinguisher



Hydraulic chute support



Rear view camera



Aluminum extension chutes



PVC pipe incl. bracket



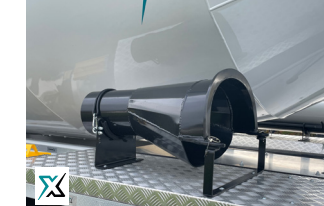
Retaining flap with
Swivel chute



Foldable underide guard with step



Unpressurized admixture tank



Steel reducing chute



Oil pressure gauge for
Concrete consistency
measurement



Air pressure additive tank (50 L)



Extension lashings
from plastic o. steel



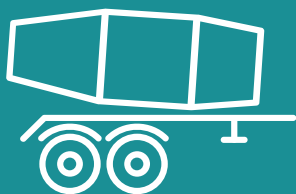
Water meter



Toolbox



Security door



CONCRETE MIXING TRAILER FROM 10 TO 15 M³ SEMI-TRAILERS – FOR HIGH FLEXIBILITY REQUIREMENTS

FLEXIBLE UTILIZATION PLANNING THROUGH CHANGEABLE USE OF THE TRAILER MACHINE

To increase your flexibility, our EUROMIX concrete mixers can be used as semi-trailers. An essential advantage is the changeable use at **low order backlog for concrete transports**. I.e. immediate flexible use of the tractor for bulk materials such as sand, gravel, soil movements, etc.

Your utilization planning of the tractor can be done independently of the concrete transport.

Furthermore, the large loading capacity reduces the number of required transport operations, so that maximum efficiency can be achieved. We offer our EUROMIX semi-trailers in the size classes from 10 m³ to 15 m³.



HARDOX®

Advantages of our lightweight mixed trailers:

- Use of wear-resistant and particularly hard Hardox steel 450/500
- Particularly powerful gearboxes
- Reinforced spiral from 5 to 6 mm Hardox steel 500
- Weight saving from 10 % to 15
- Use of weight-optimized individual components e.g. aluminum staircase
- Lower costs/higher Yield per m³ of ready-mix concrete





MIXER TRAILER WITH HYDRAULIC DRIVE

Model	10M R	12M R	10M L
Capacity	10 m ³	12 m ³	10 m ³
Geometric volume	16.500 l	19.420 l	16.500 l
Water tank volume	10.510 l	12.787 l	10.510 l
Tank inclination	11,3°	10,5°	11,3°
Material	S355 steel	S355 steel	Hardox
Weight	7.650 kg	8.400 kg	7.300 kg

MIXED SEMITRAILER WITH ENGINE

Model	12M R	15M R
Capacity	12 m ³	15 m ³
Geometric volume	19.420 l	24.390 l
Water tank volume	12.787 l	15.200 l
Tank inclination	10,5°	9,3°
Material	S355 steel	S355 steel
Weight	9.150 kg	9.450 kg

SERVICE

We attach great importance to fast response times, excellent service and first-class support in order to meet our customers' high requirements and expectations of our customers. EUROMIX MTP partners and facilities worldwide have the staff and equipment to support you whenever you need us.

Since we build our commercial vehicle bodies ourselves to a large extent, we can guarantee a fast and reliable supply of spare parts. For this reason, we are only marginally dependent on spare parts suppliers.

Do you personally have an idea to improve your work processes by a special adaptation on your commercial vehicles or do you only want to make small changes on your truck mixers or dump trucks? Talk to us, we will find a solution to improve your work processes and thus improve your efficiency.

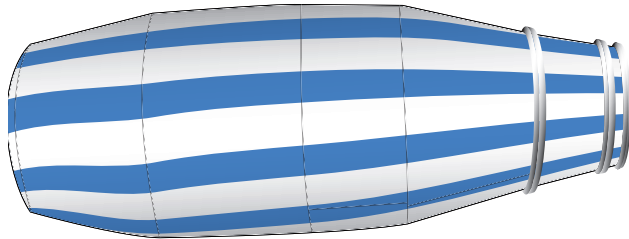
Our trained staff is ready to assist you in word and deed.

You will receive support in all areas of commercial vehicle construction and sales from our specialized employees. They will help you with all questions concerning your project in construction, mining or concrete transport. Be it an engineer to redesign some attachments of your commercial vehicle or the project manager to answer all your questions when your ordered vehicles are delivered.

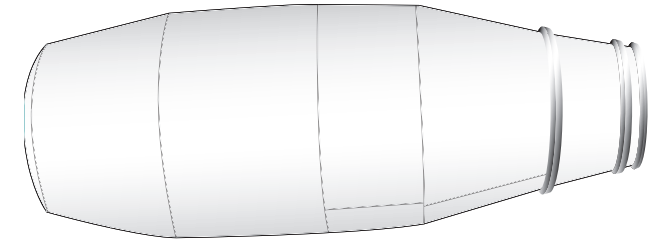
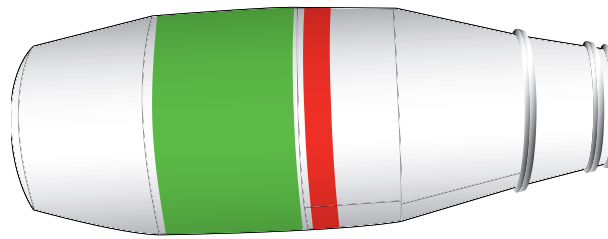
Do you want a special paint job for your vehicles? Do you need further option accessories? To meet your requirements and expectations, we from EUROMIX MTP always give our best for you. We are looking forward to a challenge with you as our customer.



PAINT JOBS



Multicolor custom painting on request



Standard single color paint

REFERENCE





**WE ARE LOOKING FORWARD
TO MEETING YOU!**

euromix.de



Euromix MTP GmbH / Gänsekamp 7 / 32457 Porta Westfalica / Germany

Phone: +49 (0) 571 3 98 49 31 / **Fax:** +49 (0) 571 3 98 49 49 / **Mail:** info@euromix.de

Opening hours: Monday – friday from 8:00 to 17:00 Uhr